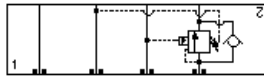
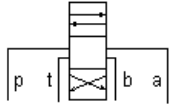
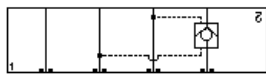


**MODELL**  
NBA

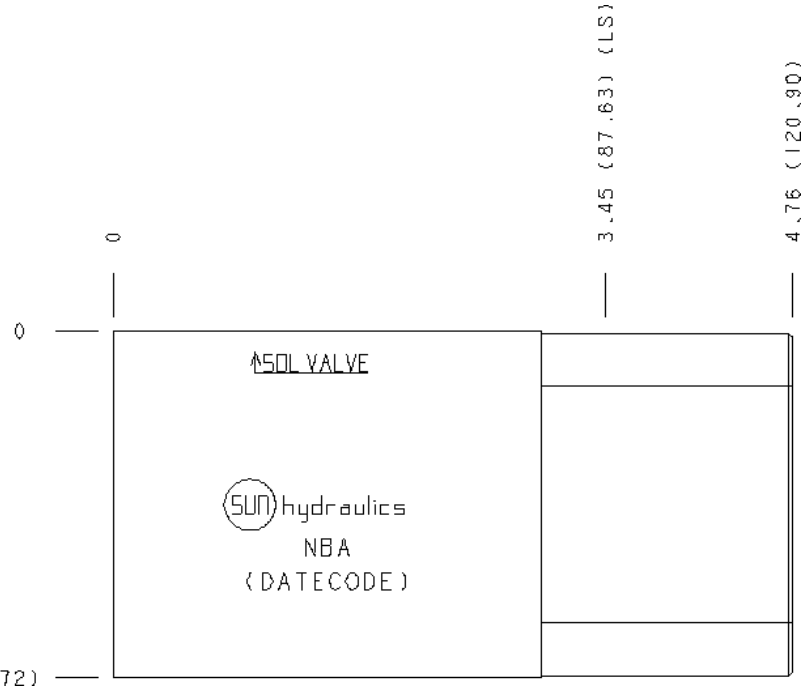
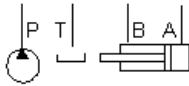
**In A, Anschluss 3 nach B und Anschluss 4 nach T**  
**EINSCHRAUBBOHRUNG: T-22A**



Counterbalance, On A, Pilot from B, Vent to T



Pilot Operated Check, On A Pilot from B, Vent to T



**KONFIGURATION ÄNDERN**

(none) Modifier 6061-T651 Aluminum, Buna-N

**KOMPONENTEN**

Part	Beschreibung	Anzahl
500-001-014	O-Ring	5
700-001	Seal Plate	1
850-004-218	Plug	2

**BEMERKUNGEN**

**Important:** Carefully consider the maximum system pressure. The pressure rating of the manifold is dependent on the manifold material, with the port type/size a secondary consideration. Manifolds constructed of aluminum are not rated for pressures higher than 3000 psi (210 bar), regardless of the port type/size specified.

**TECHNISCHE DATEN**

Gehäusetypp	Sandwich
Lochbild	ISO 05
Gehäuseeigenschaften	In A, Anschluss 3 nach B und Anschluss 4 nach T
Verkettungshöhe	63 mm
Einschraubbohrung	T-22A
Open Cavities	1
Gewicht	1.07 kg.

**CONFIGURATION OPTIONS**

**MODIFIER**

Standard Options	Modifier	Description
/S	6061-T651 Aluminum, Buna-N	
/V	65-45-12 Ductile Iron, Buna-N, Blackened	
/N	6061-T651 Aluminum, Viton	
/Y	65-45-12 Ductile Iron, Viton, Blackened	

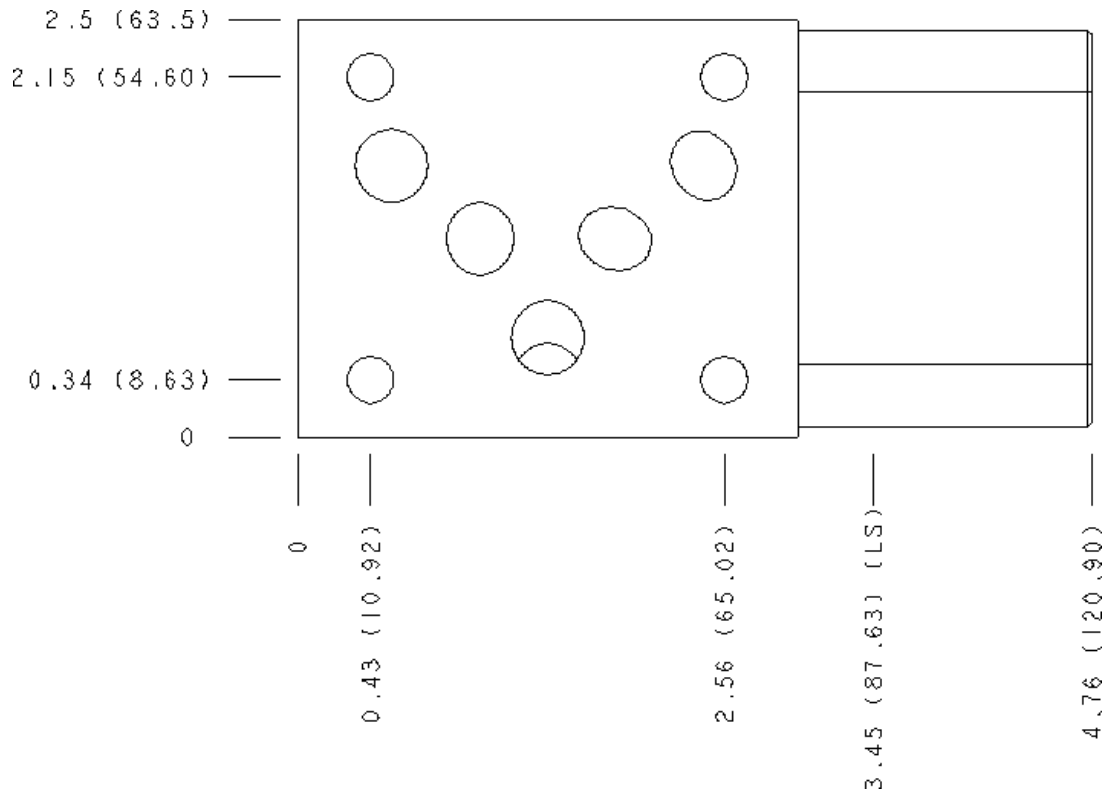
**MANIFOLD FACES**

**FACE GRID**

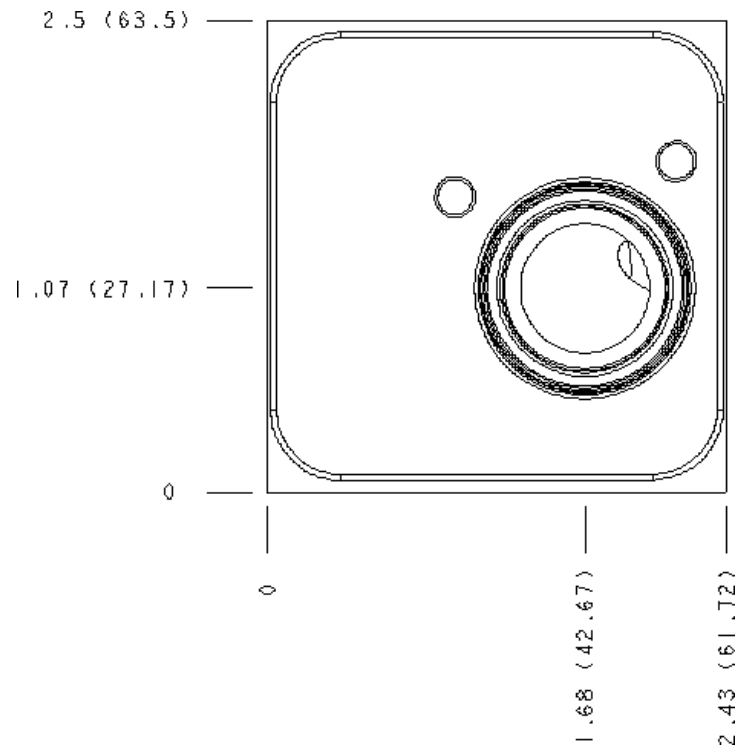


5	6	7	8
9	10	11	12

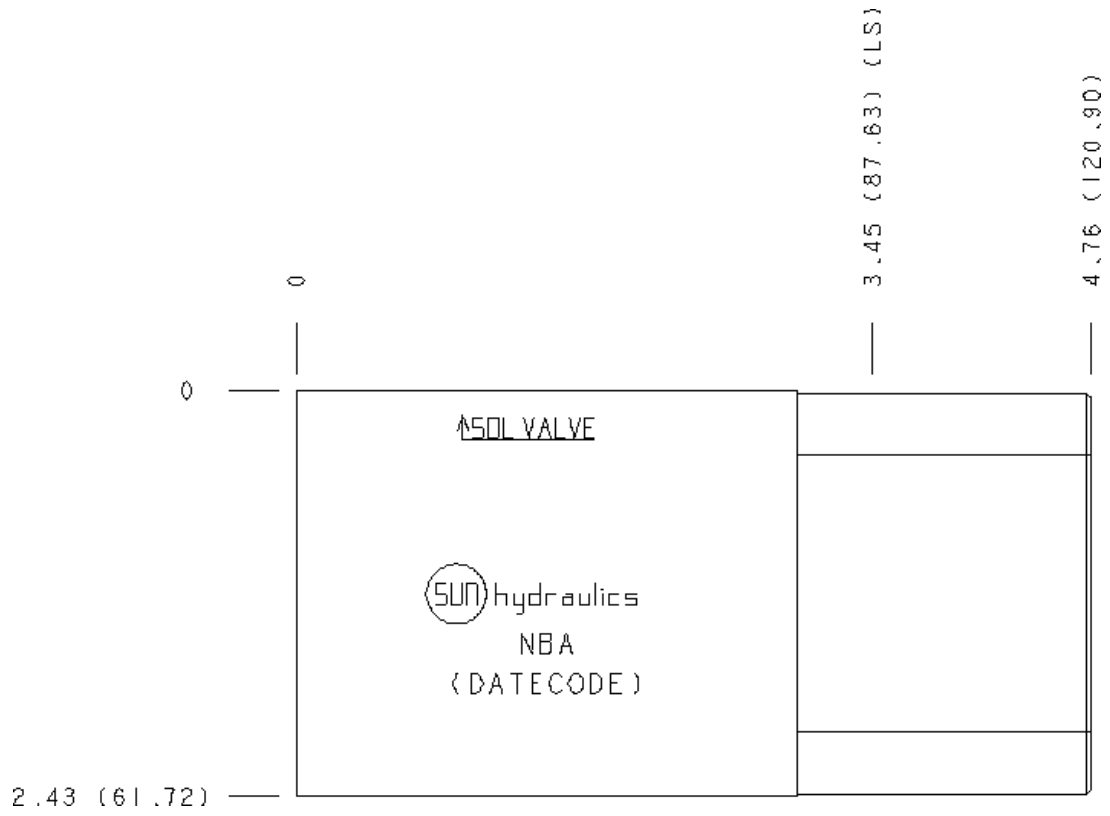
### Face 2



### Face 3



### Face 6



### Face 10

