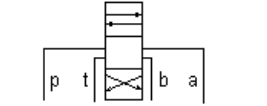
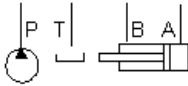


MODELL
ZJN

Abschlussplatte, P nach T



Blanking Plate, P to T, A and B Blocked



TECHNISCHE DATEN

Gehäusetyyp	Sandwich
Lochbild	ISO 05
Gehäuseeigenschaften	Abschlussplatte, P nach T
Open Cavities	0
Gewicht	0.44 kg.

KONFIGURATION ÄNDERN

(none) Modifier 6061-T651
Aluminum, Buna-N

KOMPONENTEN

Part	Beschreibung	Anzahl
A330-006-006	SAE Plug	1

BEMERKUNGEN

Important: Carefully consider the maximum system pressure. The pressure rating of the manifold is dependent on the manifold material, with the port type/size a secondary consideration. Manifolds constructed of aluminum are not rated for pressures higher than 3000 psi (210 bar), regardless of the port type/size specified.

CONFIGURATION OPTIONS

MODIFIER

		6061-T651 Aluminum, Buna-N
Standard Options	/S	65-45-12 Ductile Iron, Buna-N, Blackened
	/V	6061-T651 Aluminum, Viton
	/Y	65-45-12 Ductile Iron, Viton, Blackened

MANIFOLD FACES

FACE GRID

1	2	3	4
5	6	7	8
9	10	11	12

Face 1

□

Face 5

□

Face 6

□

Face 7

□

Face 8

□

Copyright © 2002-2014 Sun Hydraulics Corporation. All rights reserved.